

Report From A

BEACH BUM ASTRONOMER


By: Jim Thompson

~~Nov.~~ Dec. 2022

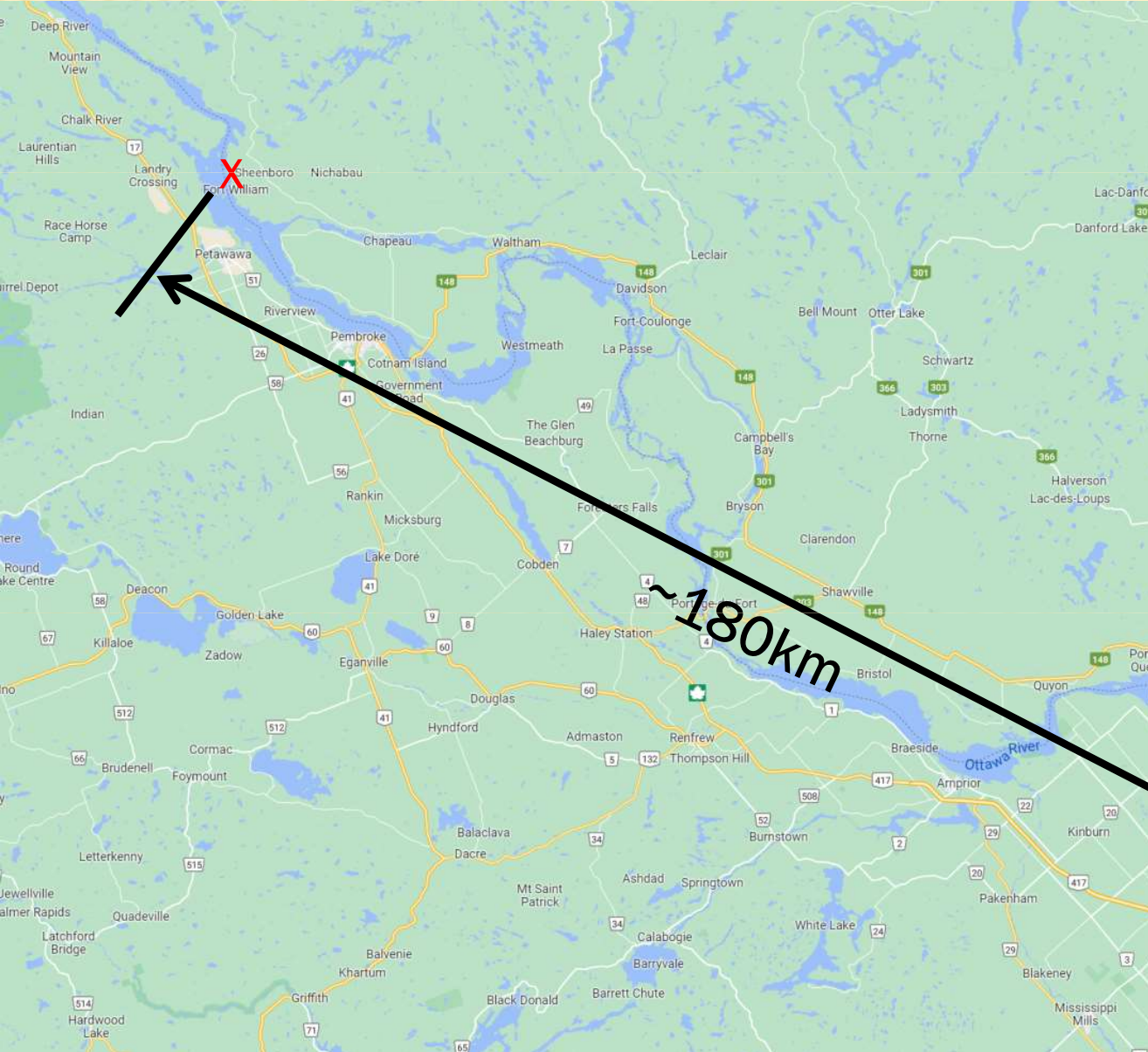
OUTLINE

- ✗ Where was at
- ✗ What's my rig
- ✗ Observations:
 - + Views plenty wide
 - + Feelin' a little gassy
 - + Surviving bug-pocolypse
 - + Behold the lowest of the low
 - + Falling in love ... or a strong "like"
 - + Had socks blown off

WHERE WAS AT



A satellite map of the Ottawa River area. The river flows from the top left towards the bottom right. On the left bank, there is a small islet labeled 'Deep River Islet Lighthouse' with a lighthouse icon. On the right bank, there is a large green area labeled 'Brennan's Recreational Farms'. The river is labeled 'Ottawa River' in the center. Other labels include 'Chert-Schwan' and 'Mountain' on the right bank.



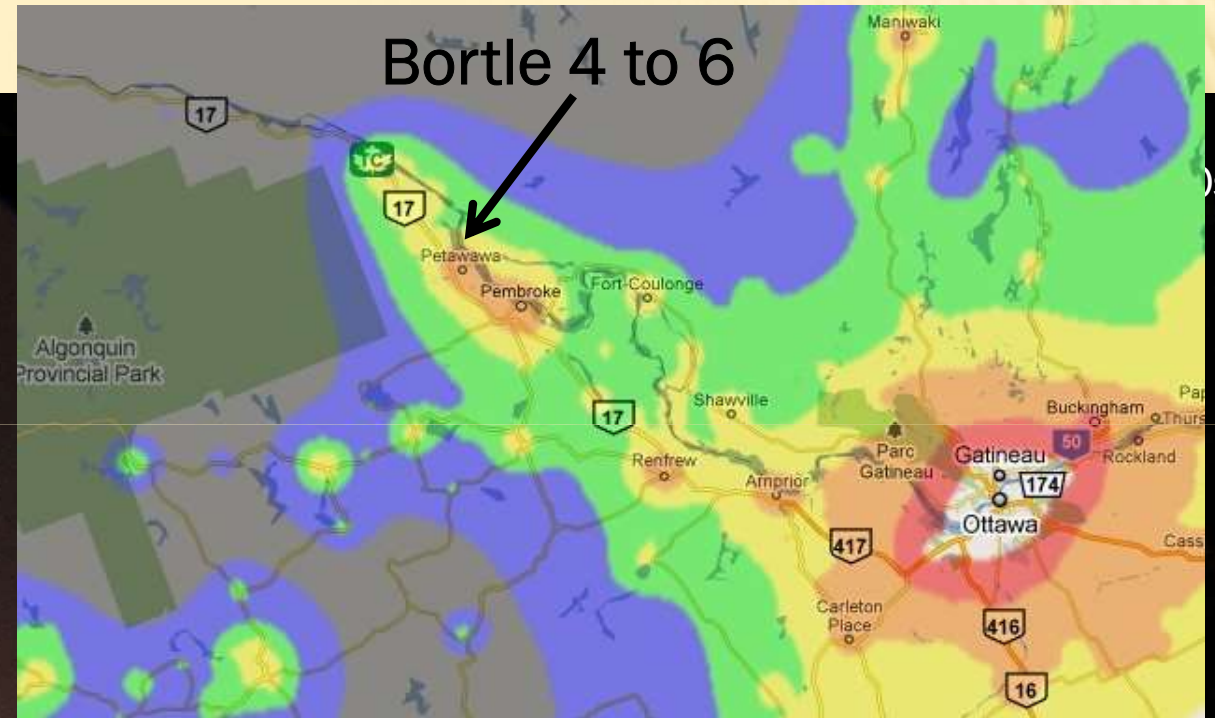
WHERE WAS AT



Canon M3, EF-M 18-150 (59mm) f/8, ISO100, 0.01s



WHERE WAS AT



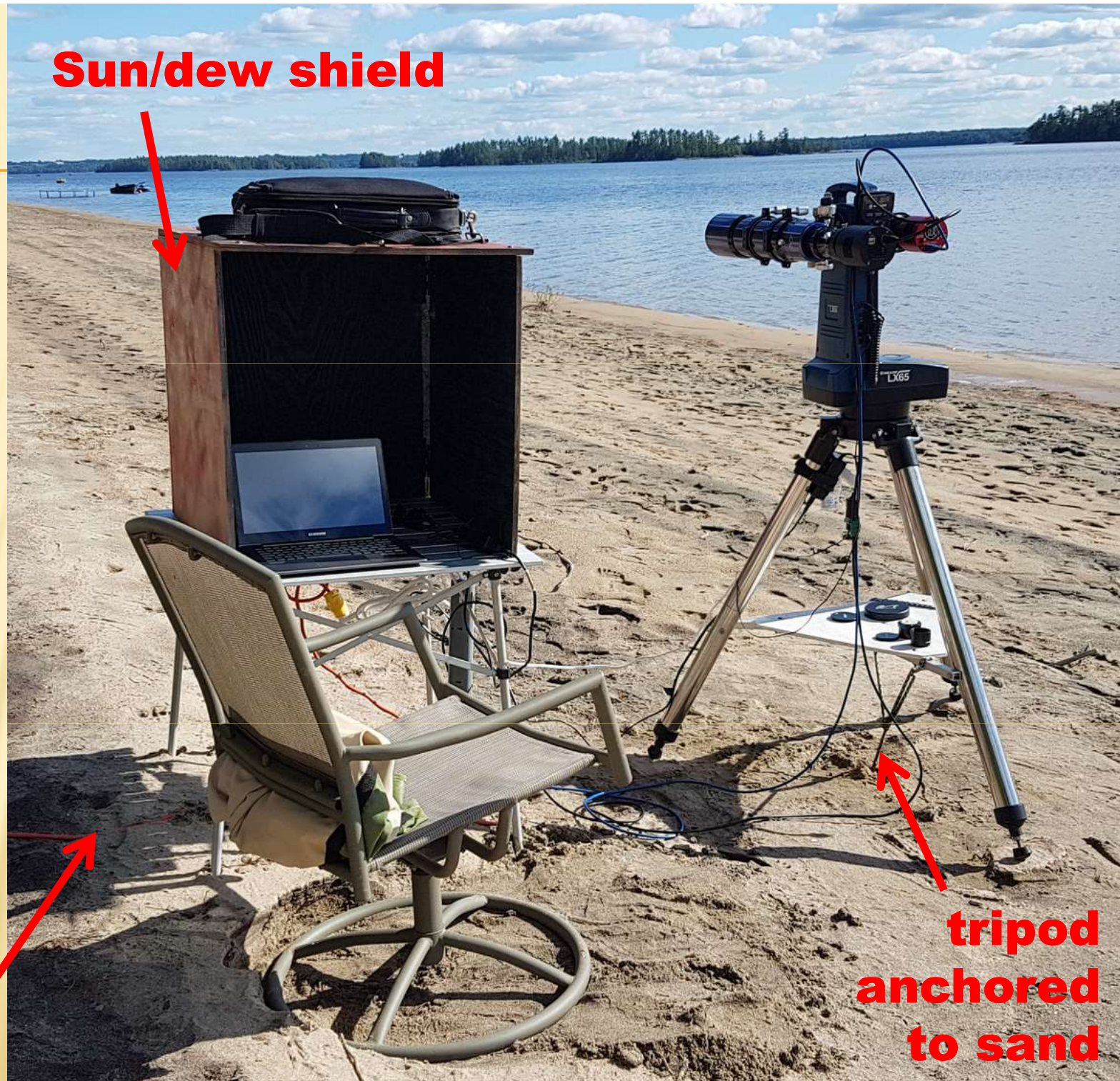
Canon M3, Laowa 4mm fisheye f/2.8, ISO3200, 30s

WHAT'S MY RIG

✖ EAA setup:

- + Meade LX65 mount
- + WO ZS80 (80mm)
- + Askar FMA230 (50mm)
- + TPO UltraWide (40mm)
- + DS432M TEC
- + ASI533MC Pro
- + assort. Filters
- + laptop

110AC



WHAT'S MY RIG

✖ Point'n'shoot setup:

- + Canon M3 mirrorless
- + Canon EF-M 18-150 zoom
- + Laowa CF 4mm f/2.8 210deg fisheye
- + Manfrotto tripod



WHAT'S MY RIG

- ✗ Portability is key!
- + Water levels can change quickly & dramatically!



May 2022

OBSERVATIONS

VIEWS PLENTY WIDE

Askar FMA230
(50mm)



TPO Ultrawide (40mm)

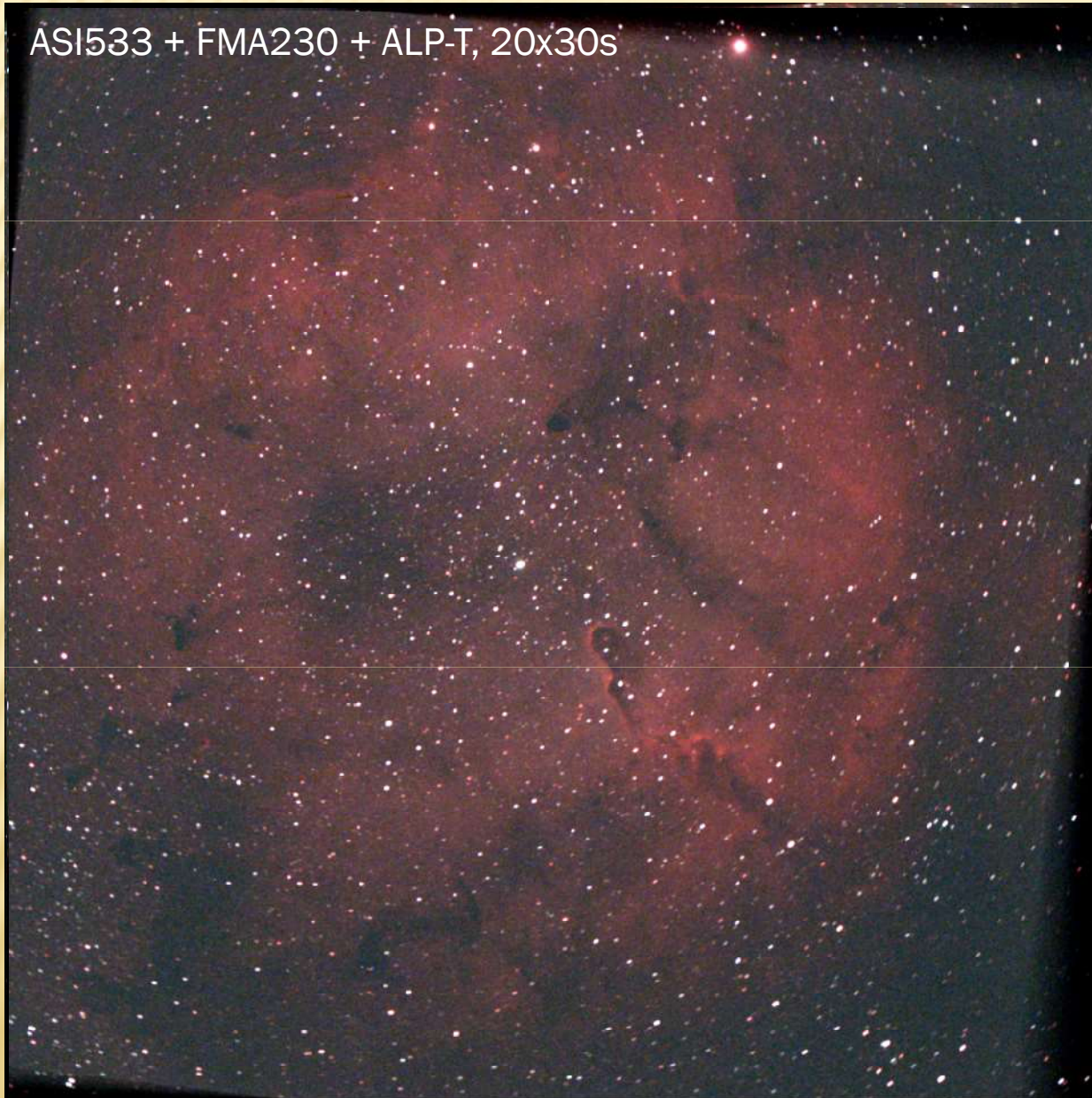


Summer
+ Milky
Way =

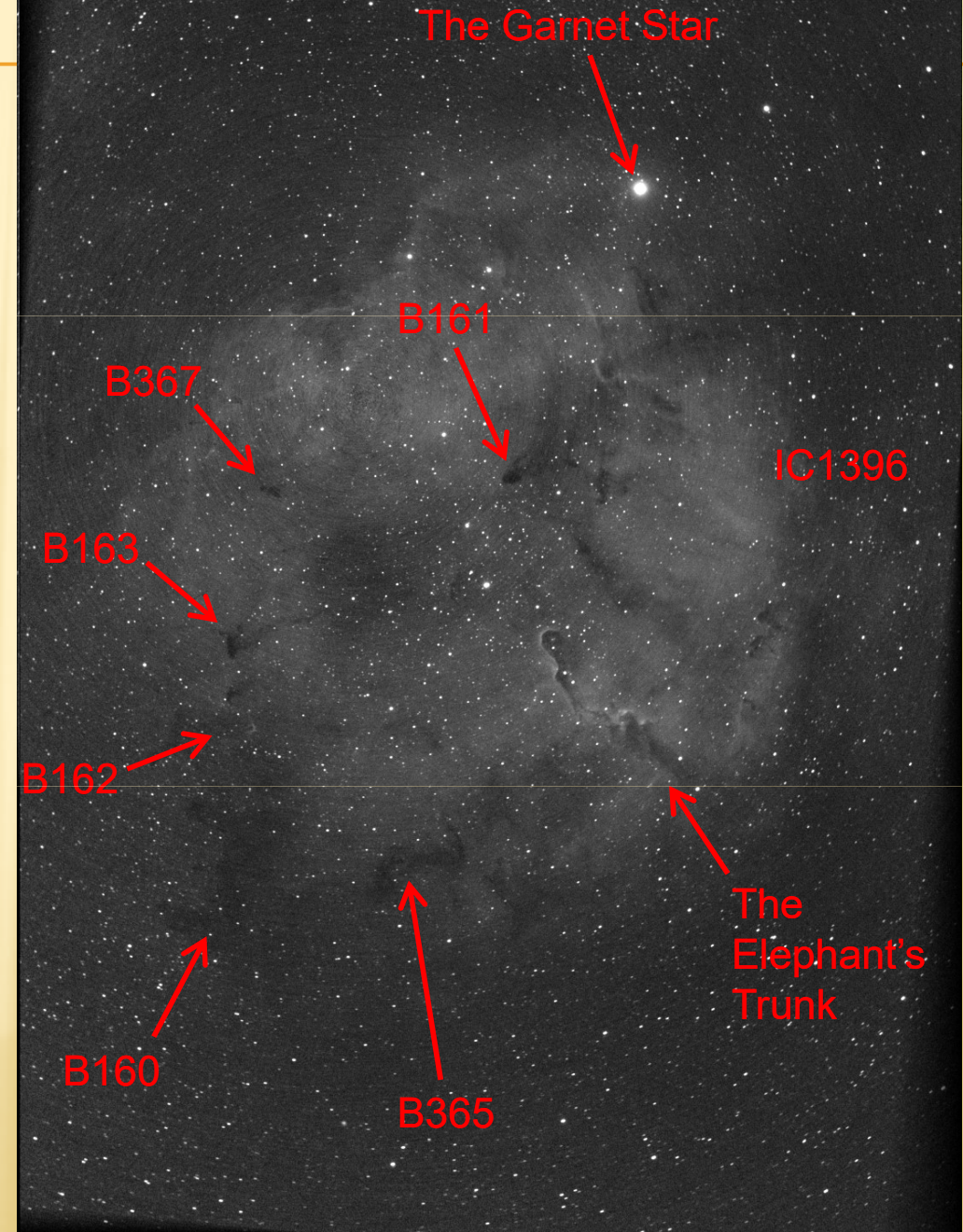


VIEWS PLENTY WIDE

ASI533 + FMA230 + ALP-T, 20x30s



DS432M + TPO UltraWide + 7nm H α , 30x20s



FEELING A LITTLE GASSY

- ✖ Experimented with narrowband imaging
 - + Use filters to gather image data from one gas emission at a time: Oxygen-III, Hydrogen- α , Sulfur-II



Free Optolong 3nm
Set to Test!

FEELING A LITTLE GASSY

DS432M + ZS80ED II, 12x50s



G



H- α

B



O-III

R



S-II

SURVIVING BUG-POCOLYPSE



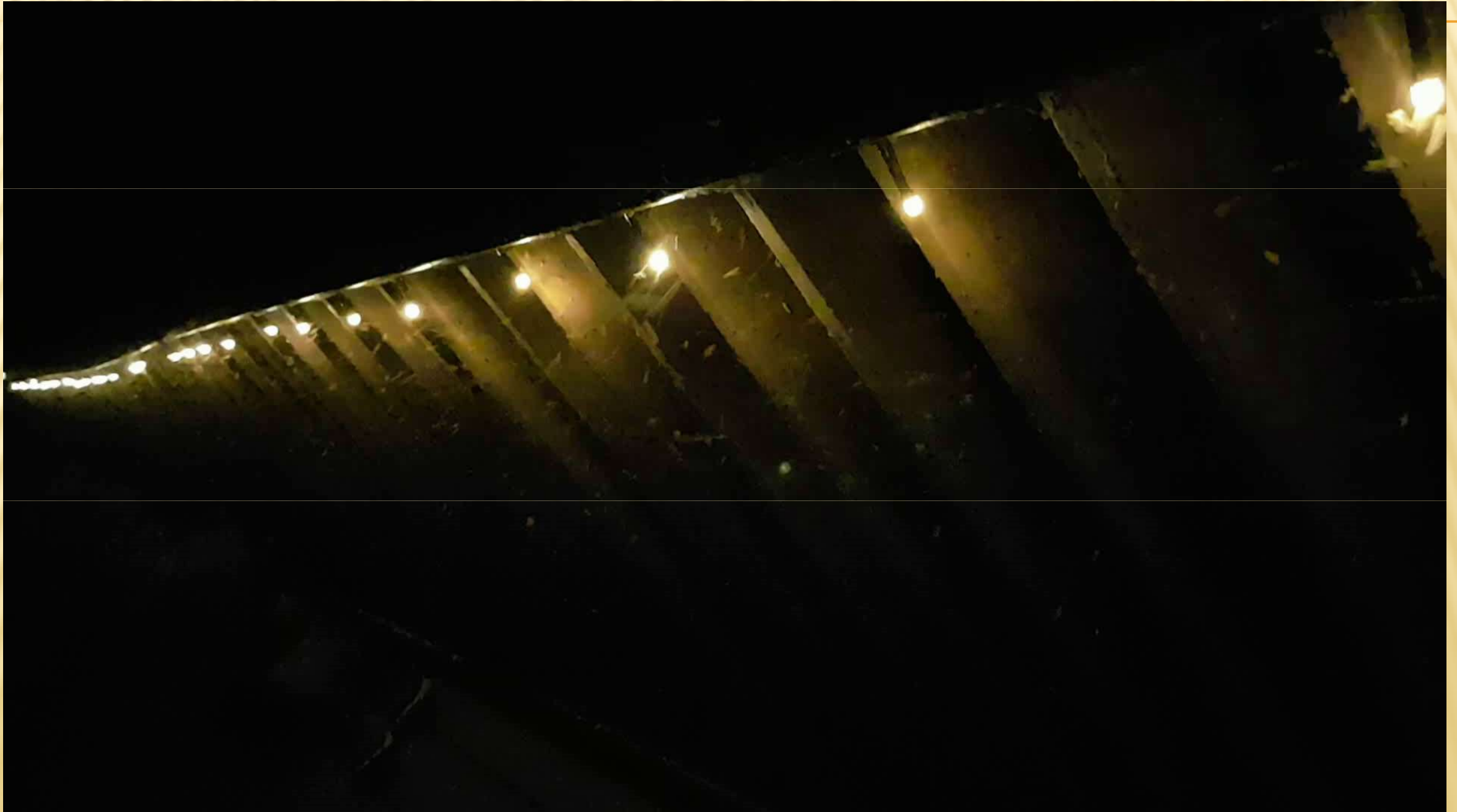
+



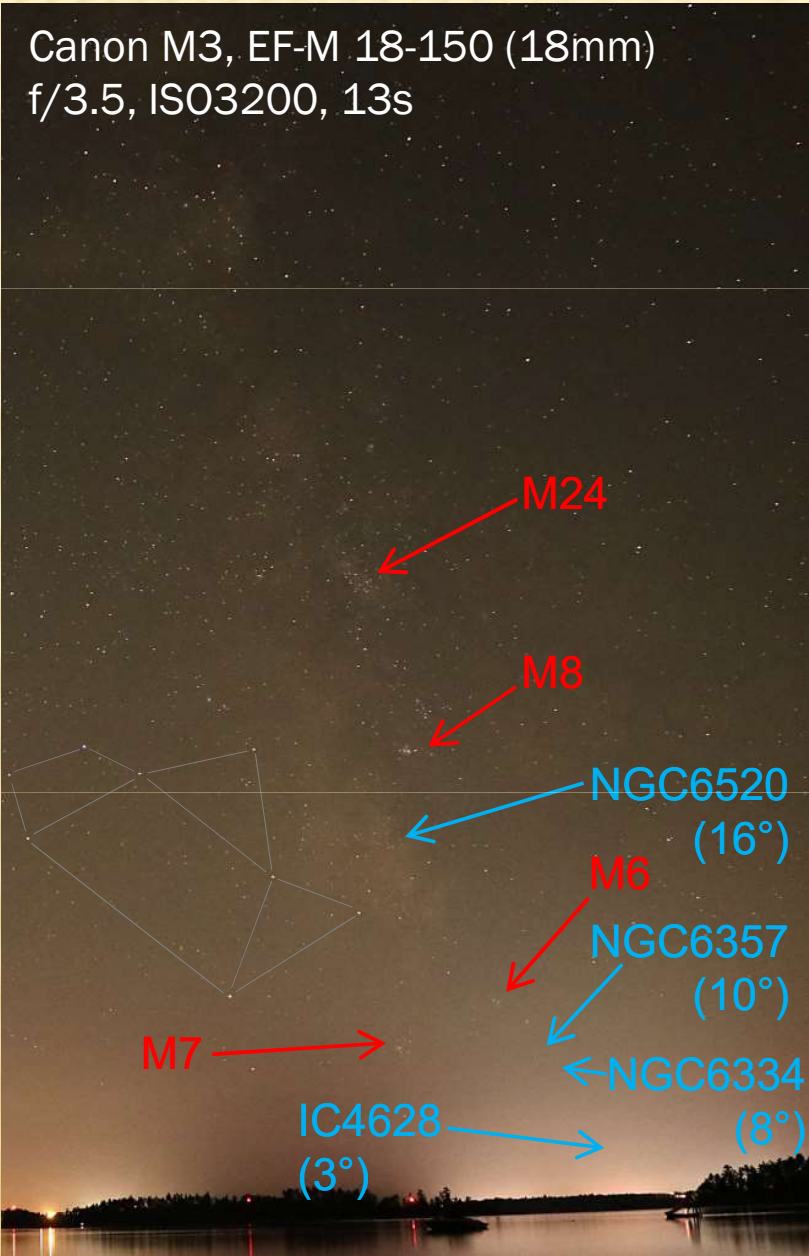
=



SURVIVING BUG-POCOLYPSE



BEHOLD THE LOWEST OF THE LOW



NGC6334
Dead End
Chest Nebula



FALLING IN LOVE ... OR A STRONG “LIKE”

✗ Been searching for better monochrome solar imaging camera

2.9 μm + IMX290: fast & small pixels / sensor too small

2.4 μm + IMX183: smaller pixels & big sensor / artifacts

9 μm + IMX432: low noise & fast / pixel size way too big

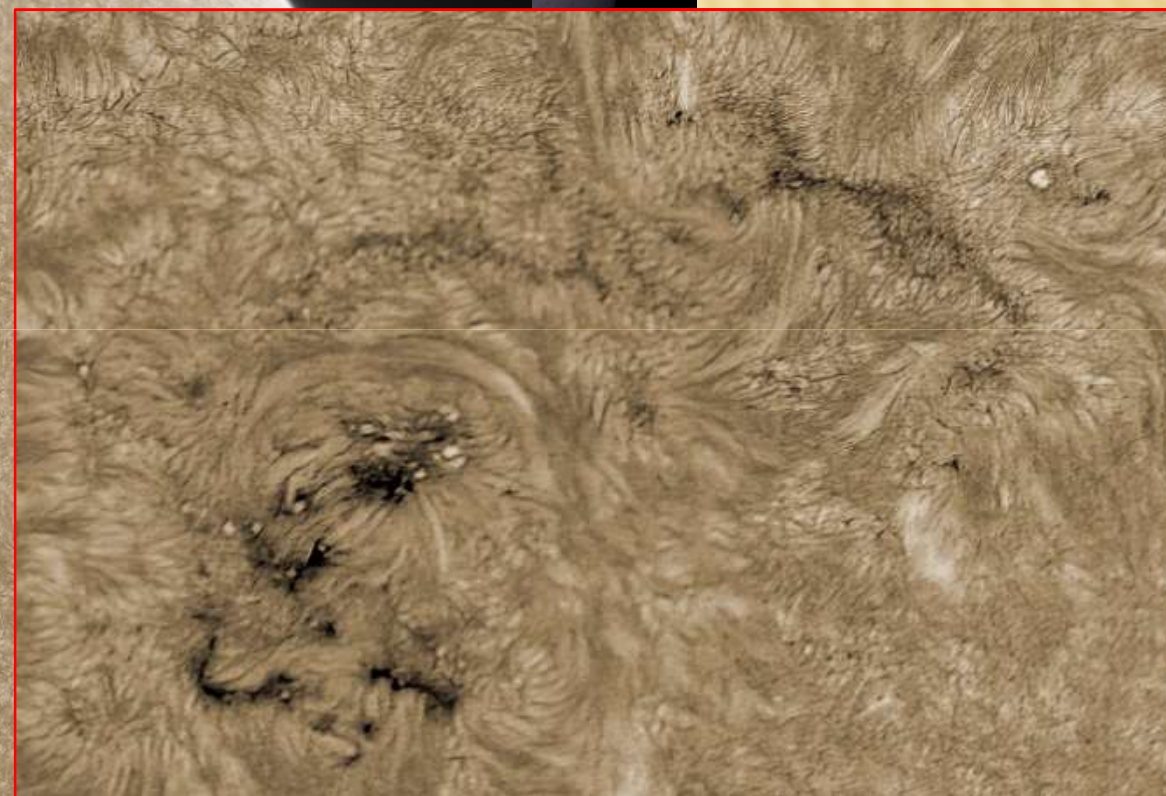
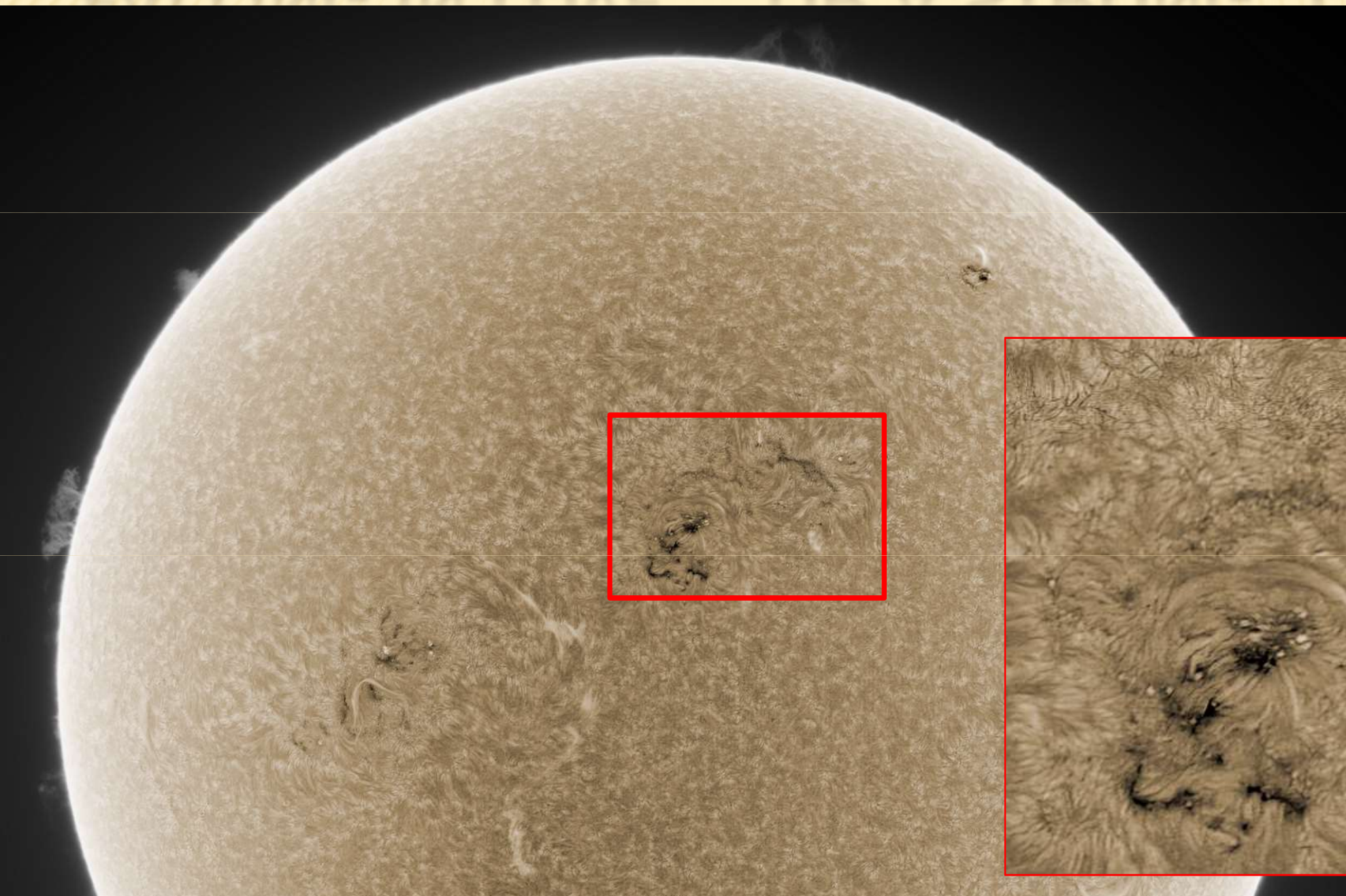
>4 μm + New sensors: big sensor but also big pixels!

1.85 μm + Older sensor IMX226: bigger sensor & tiny pixels

FALLING IN LOVE ... OR A STRONG “LIKE”



Imaging Source
DMK 33UX226



HAD SOCKS BLOWN OFF

Eve of July 22nd, 11:40pm to 12:50am



Canon M3, EF-M 18-150 (18mm) f/3.5, ISO6400, 13s

HAD SOCKS BLOWN OFF

Eve of Sept. 4th, 10:50pm to 11:50pm



Canon M3, EF-M 18-150 (18mm) f/3.5, ISO3200, 13s

HAD SOCKS BLOWN OFF

STEVE !



Canon M3, EF-M 18-150 (18mm) f/3.5, ISO3200, 13s

THANKS FOR WATCHING!

